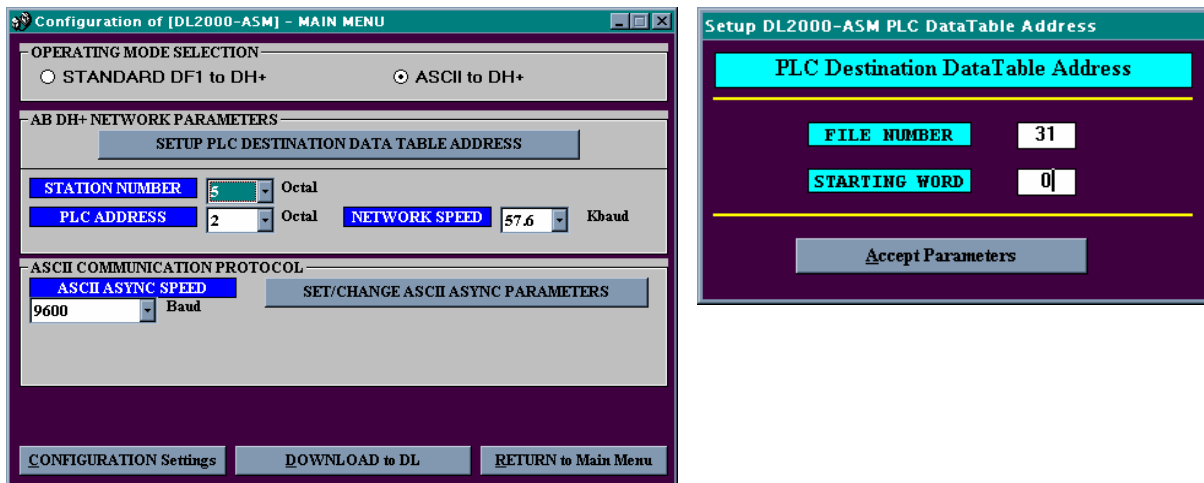


DL3500-ASM Version 2.00 Application Note

The following is a brief description on the Functionality of the DL3500-ASM device.

Version 2.00 combines the ability to send ASCII scanner data received over the DataLink's serial port to a PLC/SLC, as well as the ability to receive ASCII data from a PLC/SLC and send it out the DataLink's serial port. Both directions of communications use PLC5 Type Write's.

Use DL32 to configure the DataLink as a DL3500-ASM. The important parameters are for the ASCII SCANNER implementation. The only relevant one for the ASCII TRANSMITTER operation is the DataLink's address. Of course the serial settings for the DataLink's ASCII port are relevant to both modes. See Below:

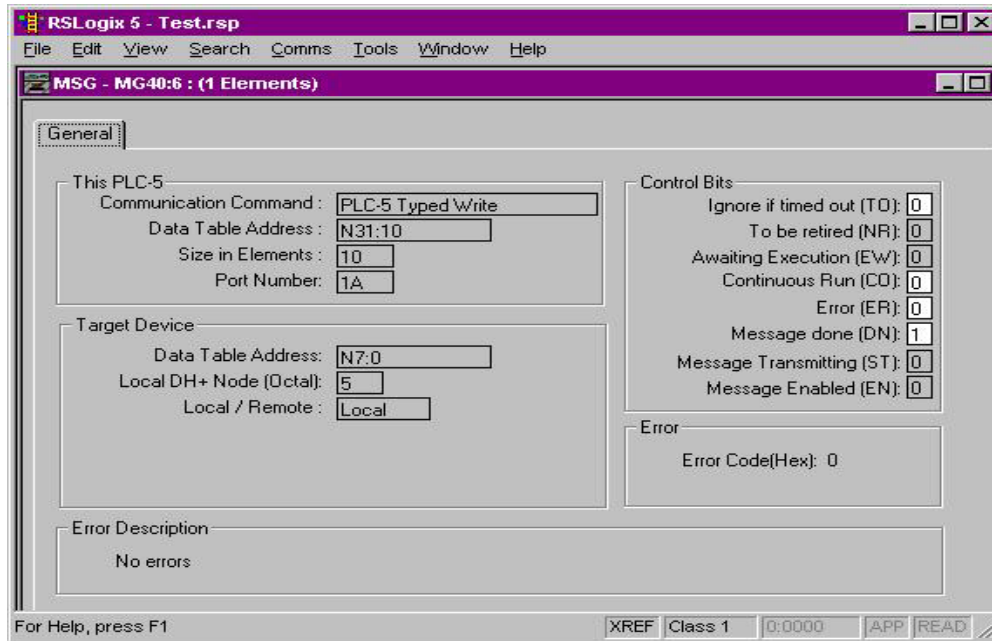


Once the DataLink has been configured and the serial port is hooked to the ASCII device there are two things that have to be done.

- 1) For the ASCII Scanner part to work the File N31:0 (this is just an example, any other file number or PLC address can be used as long as the DataLink is configured correctly) in the PLC/SLC address 2 has to exist. Now when the DataLink receives ASCII data from the scanner it is stored in the DL3500 until a CR is received. Once a CR is received the ASCII data is then written to the PLC/SLC address 2 in file N31:0.

DL3500-ASM Version 2.00 Application Note

- 2) For the ASCII Transmitter to work a PLC5 Type Write MSG instruction must be set up in the PLC/SLC. The following shows how these are set up to communicate with the DataLink at address 5.



Note:

- 1) N7:0 as the Data Table Address is always used. This number doesn't determine anything it is just a valid PLC address.
- 2) The Size in Elements is set to 10 words in my example, which will be 20 ASCII Characters. The DL3500-ASM Version 2.00 will either transfer characters up to this count or until a **CR** is reached.
- 3) An **ASCII CR** has a value **0Dh** or if a N "Integer" file is viewed in ASCII it will resemble a **^M**.

The following shows what the file N31:0 will look like after running with both the SCANNER and TRANSMITTER working. The DL3500 will Transmit the following ASCII string "1234567".

